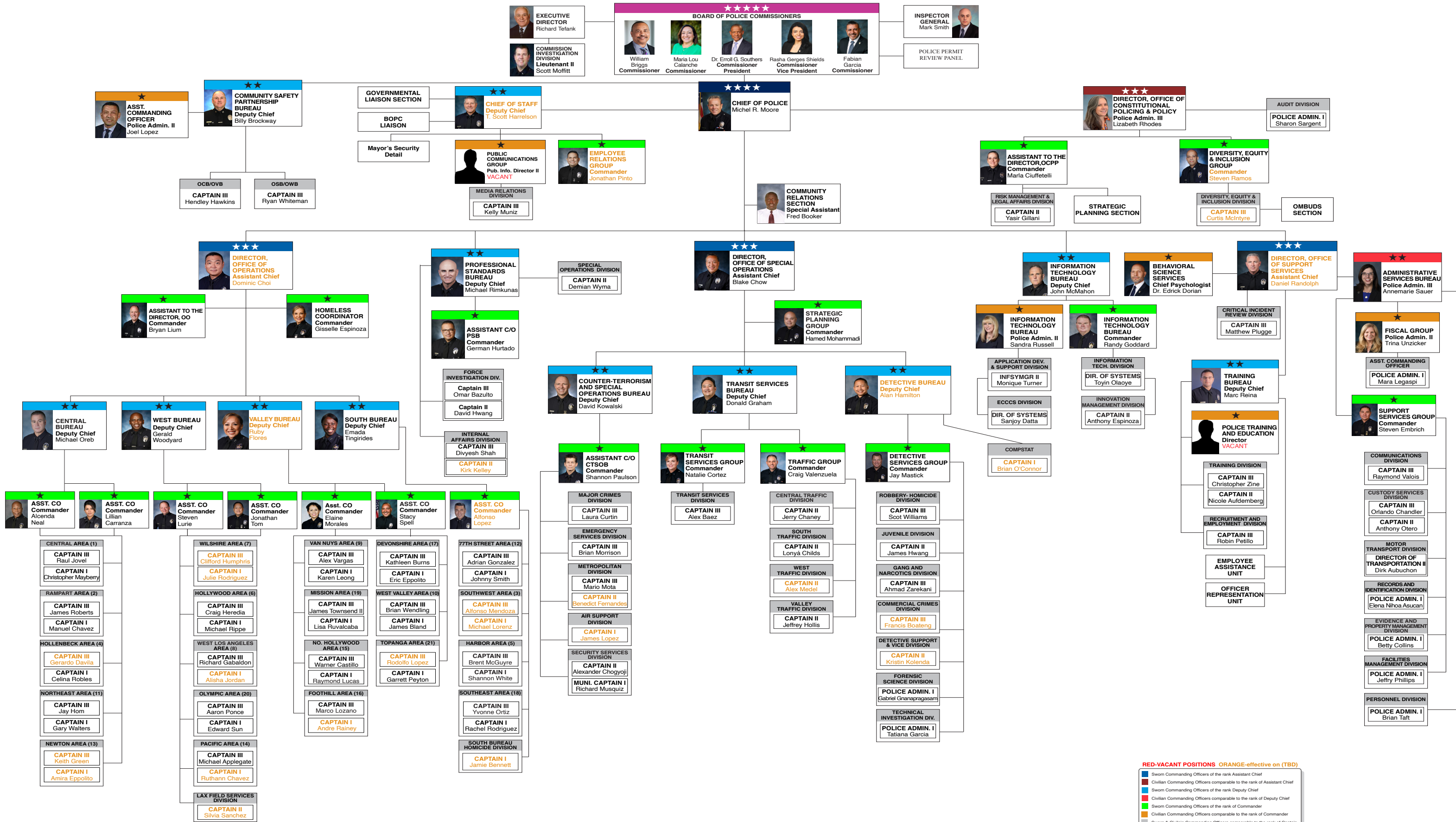




# LOS ANGELES POLICE DEPARTMENT ORGANIZATION CHART

## MICHEL R. MOORE CHIEF OF POLICE

As of DP 1, 2024 (January 14, 2024 - February 10, 2024)



**RED-VACANT POSITIONS ORANGE-effective on (TBD)**

- Sworn Commanding Officers of the rank Assistant Chief
- Civilian Commanding Officers comparable to the rank of Assistant Chief
- Sworn Commanding Officers of the rank Deputy Chief
- Civilian Commanding Officers comparable to the rank of Deputy Chief
- Sworn Commanding Officers of the rank of Commander
- Civilian Commanding Officers comparable to the rank of Commander
- Sworn & Civilian Commanding Officers comparable to the rank of Captain