

COUNTER-TERRORISM AND SPECIAL OPERATIONS BUREAU

NOTICE 15.2

October 18, 2017

TO: All Concerned Commanding Officers

FROM: Commanding Officer, Counter-Terrorism and Special Operations Bureau

SUBJECT: USE OF EXPLOSIVE DETECTION CANINES ON BOMB THREAT CALLS

This Notice supersedes and replaces the previous Counter-Terrorism and Special Operations Bureau Notice, "Expanded Use of Bomb Detection Canines on All Bomb Threat Calls," dated June 18, 2015.

An Explosive Detection Canine (EDC) may be used at the scene of any bomb threat call. Prior to June 18, 2015, Department policy restricted the use of EDCs to certain types of bomb threat calls and locations. In addition, the prior policy mandated that Bomb Squad personnel had to accompany EDC teams during searches. As a result, patrol personnel were not able to fully take advantage of this important resource and were completing the walkthrough of bomb threat locations without an EDC present. An EDC is a reliable tool to detect explosive odor and is superior to a visual walkthrough of a location by patrol personnel alone.

Incident Commanders responding to a bomb threat call may request an EDC when they intend to complete a walkthrough of a location subject to a bomb threat incident. In such cases, a supervisor assigned to the Bomb Squad, Emergency Services Division (ESD), shall be contacted. The Bomb Squad supervisor will conduct a threat assessment based on the known circumstances. The Bomb Squad supervisor will determine if an EDC team is available to deploy, if the EDC team will deploy to the call alone, or if the EDC team will deploy with the Bomb Squad.

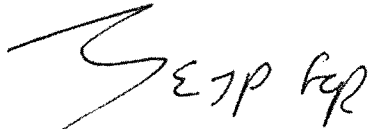
An EDC team will respond Code 3 to the call location if no Bomb Squad response is necessary. An EDC shall not be used to clear suspicious items that are encountered. In such situations, the search will be halted and Bomb Squad personnel summoned to the location. A search will also be halted and Bomb Squad personnel summoned to assist the EDC team anytime information becomes available that would warrant their response.

This expanded use of EDCs does not apply to pre-planned special events. Commanding Officers anticipating the need for EDCs at these types of events should continue to contact the Commanding Officer, ESD, as part of the event planning process.

A supervisor from the Bomb Squad can be reached anytime via Real-Time Analysis and Critical Response Division, at (213) 486-6700 or through ESD during normal business hours at (323) 342-4200.

All Concerned Commanding Officers
Page 2
15.2

If there are any questions regarding this Notice, please contact Captain Kathryn Meek,
Commanding Officer, ESD, at (323)-342-4267.

A handwritten signature in black ink, appearing to read "EJP fqr".

HORACE E. FRANK, Deputy Chief
Commanding Officer
Counter-Terrorism and Special Operations Bureau

APPROVED:

A handwritten signature in black ink, appearing to read "Sean W. Malinowski".

SEAN W. MALINOWSKI, Deputy Chief
Chief of Staff
Office of the Chief of Police

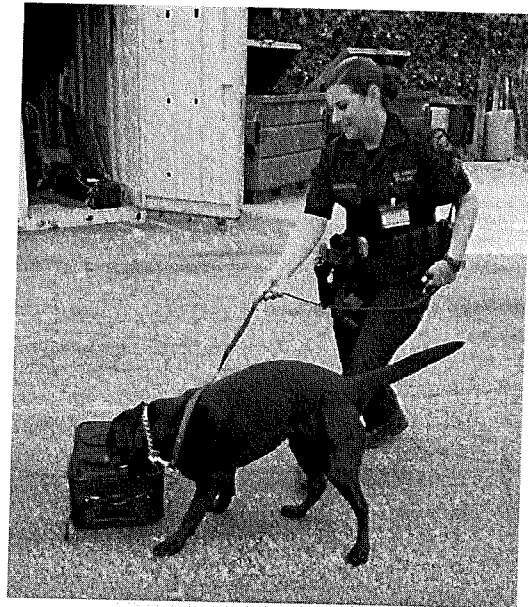
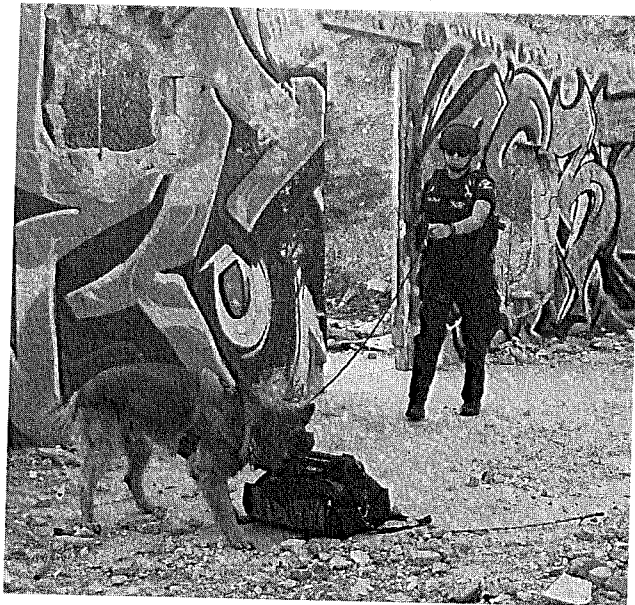
DISTRIBUTION "B"

Bomb Detection Canine Section

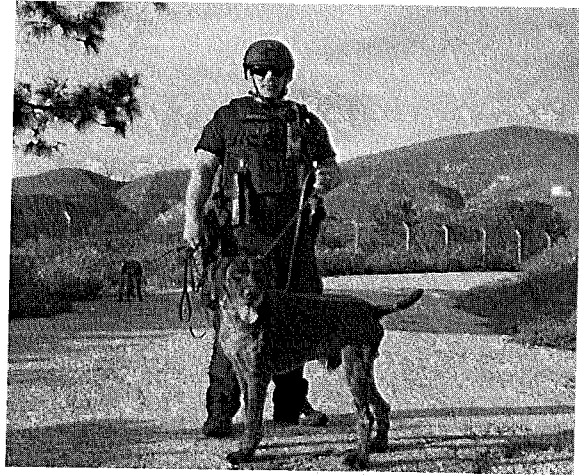
6605 Imperial Hwy
Los Angeles, CA 90045
(424) 646-6611



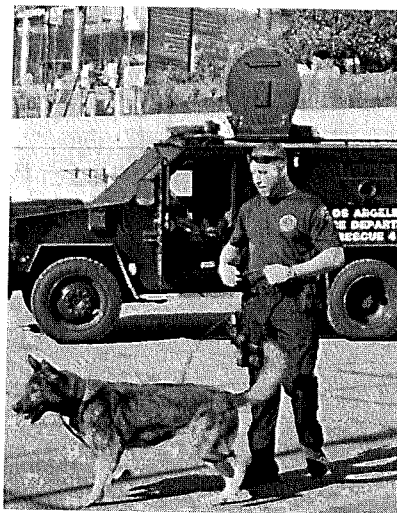
The Bomb Detection Canine (K9) Section is a specialized group of Explosive Detection Canine (EDC) handlers, and K9 partners, whose mission is to deter and detect the introduction of explosive devices in transportation systems, public events and venues within City of Los Angeles.



All officers assigned to the section attend a 10-week EDC course sponsored by the Department of Homeland Security (DHS), Transportation Security Administration's (TSA) National Explosives Detection Canine Team Program (NEDCTP) at Lackland Air Force Base, San Antonio, Texas. Handlers are paired with their K9 partners while attending this course.



The LAPD began participating in the NEDCTP in 1997. The section operates in a partnership with the TSA and Los Angeles World Airport Police to provide security at the Los Angeles International Airport. The section also works with the LAPD Bomb Squad, providing an invaluable asset to the Los Angeles community in responding to calls throughout the city.



The use of highly trained EDC teams is a proven deterrent against terrorist threats directed towards transportation systems, critical infrastructures, public events and venues. The EDC teams are deployed to conducted protective sweeps for explosives and serve as a visible deterrent against possible terrorist acts.

The Explosive Detection Canine Teams are available to respond, seven days a week to calls throughout the city. The EDC teams are available at the airport and in the City for the following types of duties

- Bomb threat incident;
- Searches for secondary devices during Bomb Squad responses or other large scale operations where the need for such sweeps are anticipated such as post blast incidents, large evacuation incidents where crowds may be targeted, and Command Post locations;
- Special events;

- Dignitary protection details;
- Search warrants;
- Unattended items/vehicles (suspicious items/vehicles are handled by Bomb Squad)

For additional information, please review the CTSOB Notice, dated October 18, 2017, for more information regarding the deployment of EDC

<http://pdinfoweb/img/bin.ashx?k=204546%09%09docs%09binData%09did%09fName%09%09xxx%091432946195%09&sh=1&a=>

To request an EDC team for your incident, an On-Duty Bomb Squad supervisor can be reached on a 24/7 basis, via RACR Division, at (213) 486-6700 or through Emergency Services Division during normal working hours at (323) 342-4200.