

By 1889, the City had grown to a population of 50,000 and the Department consisted of 80 men, including a jailer and clerk.

In 1889, Chief John M. Glass embarked on a distinguished 11-year career during which he instilled within the Department the beginnings of true professionalism.



John M. Glass

In March 30, 1889, all patrol personnel, proudly displayed new uniforms. With their introduction came these words from Chief Glass: You will keep your coats buttoned, stars pinned over your left breast on outside of coat and hold your clubs firmly. The patrolman's equipment included a 45-70 rifle, a revolver, handcuffs, whistle and baton.

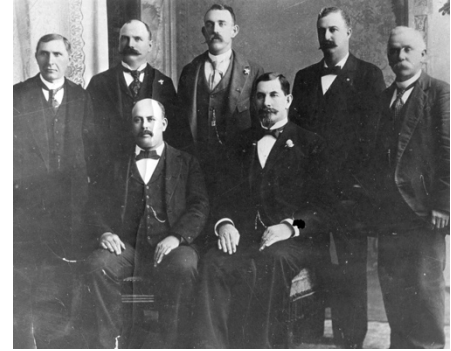


New Uniform

The second badge, silver and a 6-point star.



Charles O. Moffatt acted as a one-man detective bureau until Chief Glass organized the first Detective Bureau which consisted of Moffatt and three other officers in 1889. The number increased to six in 1890.



Detective Bureau 1890

Every year since 1893 chiefs of police from around the world gather for the International Association of Chiefs of Police Conference.



Los Angeles acquired its first patrol wagon in 1888. That first vehicle was about 12 feet long, with two seats along the sides, uncovered and drawn by one horse.



View of the inauguration of cable railway in Boyle Heights which became Los Angeles' first streetcar suburb in 1889

"New" City Hall, built in 1888 at Second and Broadway, stood until 1927.



City Hall, built in 1888

Early City expansion meant increased responsibility for the police department. Growth east of the Los Angeles River resulted in the formation of the first substation in Boyle Heights. This was no more than a heated room with a telephone, and in 1889, this served the single officer stationed there suitably.