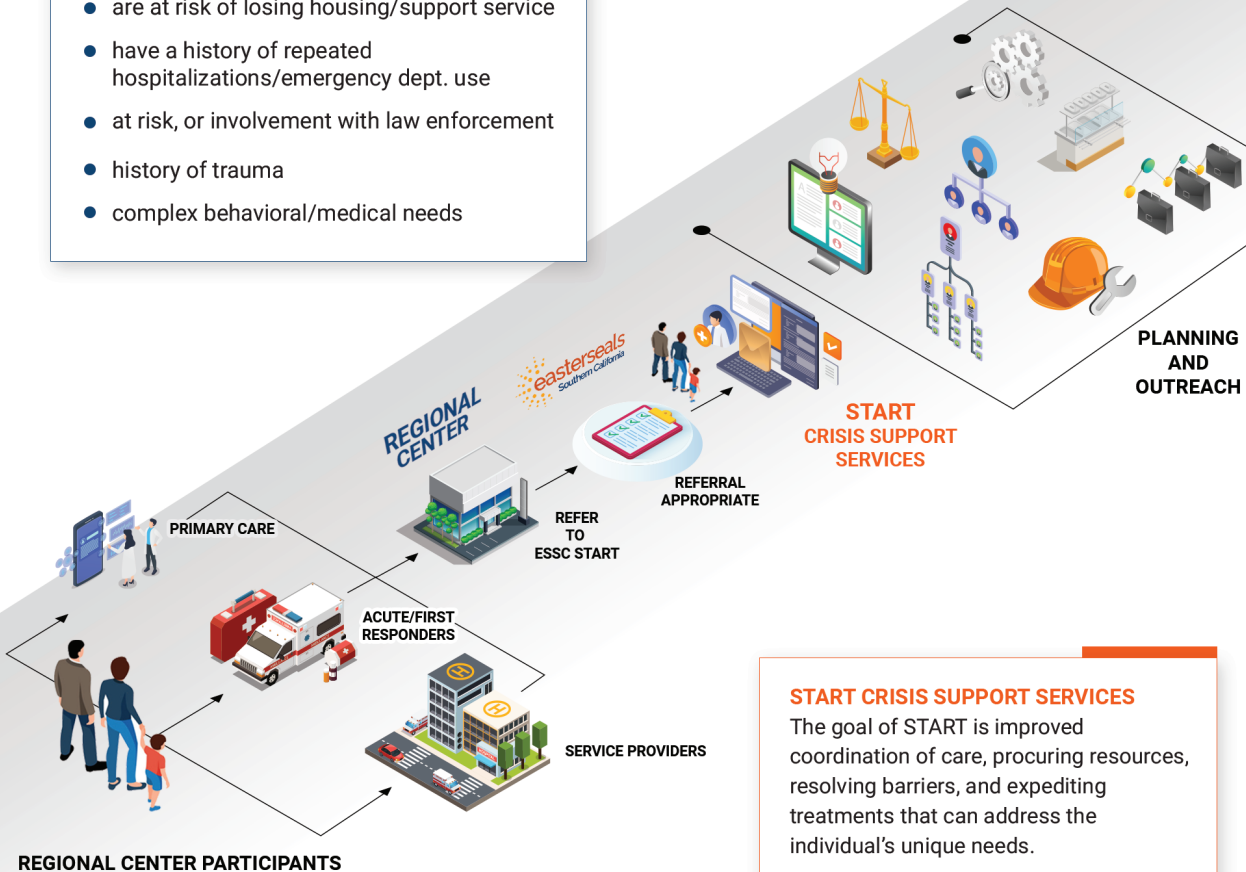


#### START PARTICIPANTS

- are at risk of losing housing/support service
- have a history of repeated hospitalizations/emergency dept. use
- at risk, or involvement with law enforcement
- history of trauma
- complex behavioral/medical needs



#### START CRISIS SUPPORT SERVICES

The goal of START is improved coordination of care, procuring resources, resolving barriers, and expediting treatments that can address the individual's unique needs.



The START Crisis Support Services team begin by focusing on wellness and strengths and improving access to services. The team can also provide:

- ✓ Crisis support services available 7 days a week
- ✓ Crisis intervention, prevention and stabilization
- ✓ Collaboration with providers in the community
- ✓ On-site therapeutic coaching, if appropriate for crisis stabilization (not out of home respite)
- ✓ Outreach and training to families and community partners
- ✓ Medication review



## START Crisis Support Services

Easterseals Southern California START (Systemic, Therapeutic, Assessment, Resource, Treatment) Services offer resources and support to individuals experiencing crisis and who have a history of a developmental disability and mental health concerns.

START works closely with an individual's physicians, mental health professionals, and occupational and speech therapists to coordinate a system of support. These services are available to people in the East Los Angeles Regional Center (ELARC) service area.



1063 McGaw Ave  
Irvine, CA 92614  
(714) 834-1111



# START CRISIS SUPPORT SERVICES



## Easterseals Southern California START

(Systemic, Therapeutic, Assessment, Resource, Treatment) services offer resources and crisis support to individuals experiencing crisis with a history of a neurodevelopmental disability and mental health concerns. These services are based on a referral from a consumer service coordinator to individuals residing in the Eastern Los Angeles Regional Center (ELARC) catchment area.

START coordinators work closely with an individual's support system. The START team focuses on wellness, strengths, improves access to services, identification of system gaps, and facilitates communication for all stakeholders involved in supporting an individual.

This collaborative planning approach has proven to be successful for crisis prevention, reducing emergency events, and managing mental health challenges.

